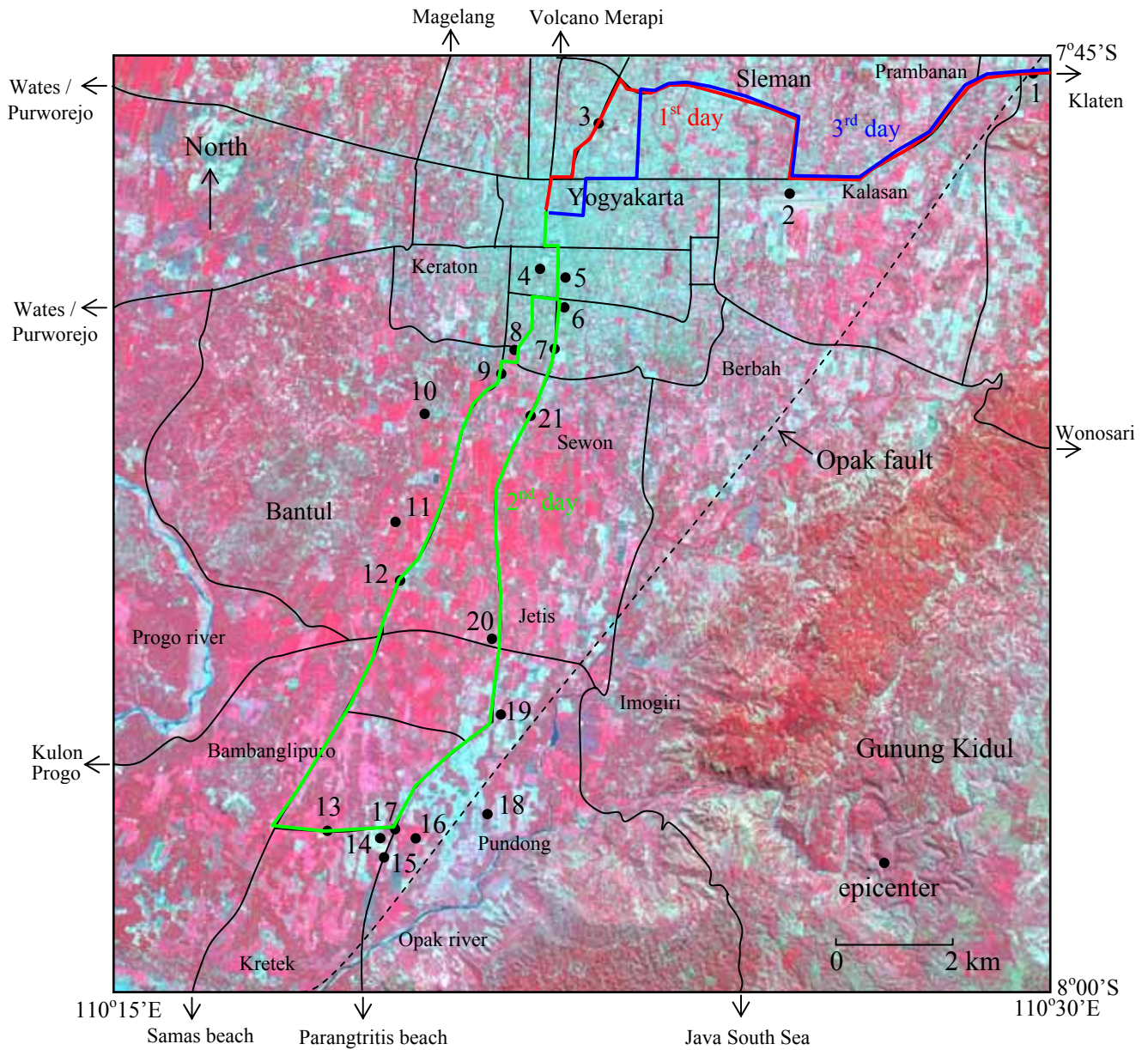


Map of Ground Survey - Yogyakarta Earthquake Affected Area June 7 - 9, 2006 (Klaten, Yogyakarta, Bantul areas)



(c) ERSDAC - CEReS, Chiba University

Figure above is false color of ASTER image 30 June 2003. The explanation of aerial photographs (numbered codes area in figure above) will be appeared in Asian Journal of Geomatics (J. T. Sri Sumantyo, F. Nishio, H. Sutanta, K. Wikantika, P.D. Kunte, I. Indreswari, "Inventory of Damaged Infrastructures in Yogyakarta Earthquake Area").

Prepared by Josaphat Tetuko Sri Sumantyo (<http://www2.cr.chiba-u.jp/mrsl/>) July 18, 2006.