

CEReS is waiting for you

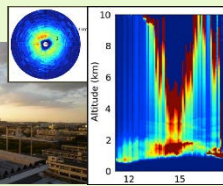


Remote sensing is an indispensable observation technique to obtain effective information towards the solution of social issues: more usage of remote sensing technology is expected. At CEReS, as a hub of remote sensing study, we have been coping with the global-scale issues through 3 programs based on our knowledge, techniques, and collaborations. CEReS is seeking prospective students with curiosity and enthusiasm. Admission information: <http://www.se.chiba-u.jp/en/admission/index.html>

01 Advanced Researches on Remote Sensing

Hiroaki Kuze (Prof.)

Keywords: Remote Sensing Engineering,
Sensor for Atmospheric Measurements
See more: <http://www.cr.chiba-u.jp/~kuze-lab/index.html>



Temporal and Spatial Behavior of Aerosol Particles
Monitored by Various Instruments Including a Lidar

Josaphat Tetuko Sri Sumantyo (Prof.)

Keywords: Microwave Remote Sensing
See more: <http://www2.cr.chiba-u.jp/jmrs/>



Josaphat Laboratory Satellite Ground Station

Yoshiaki Honda (Assoc. Prof.)

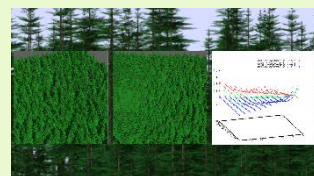
Keywords: Global Environment Evaluation Engineering,
Satellite Botany



Radio Control Helicopter Observation System

Koji Kajiwara (Assoc. Prof.)

Keywords: Satellite Botany, Information Science,
Biomass Estimation

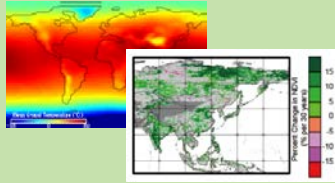


A Simulation Result of Bi-Directional Reflectance
Distribution Function of Larch Forest.

02 Global Environmental Researches by Remote Sensing

Kazuhito Ichii (Prof.)

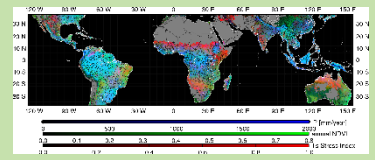
Keywords: Biogeosciences, Climate Change,
Model-Data Integration, Machine Learning
See more: <http://ichiilab.weebly.com/>



Earth System and Terrestrial Remote Sensing

Atsushi Higuchi (Assoc. Prof.)

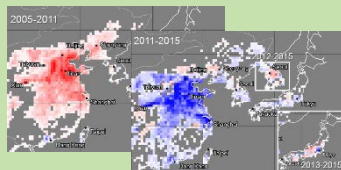
Keywords: Hydrology, Satellite Climatology,
Land-Atmosphere Interactions
See more: http://www.cr.chiba-u.jp/~higulab/top_wiki/



RGB Composite Image Revealed by Satellite Observations

Hitoshi Irie (Assoc. Prof.)

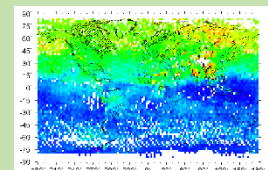
Keywords: Atmospheric Chemistry, Atmospheric Environmental
Science, Remote Sensing for Atmospheric Environment
See more: http://www.cr.chiba-u.jp/~irielab/index_e.html



Annual Changes in Tropospheric NO₂ Columns
for 2005-2011 (Left) and for 2011-2015 (Right)

Naoko Saitoh (Assist. Prof.)

Keywords: Atmospheric Chemistry, Satellite
Remote Sensing
See more: <http://www.cr.chiba-u.jp/~saitohlab/>



Monthly Average of CH₄ Concentrations on 700 hPa
Observed with GOSAT/TANSO-FTS

03 Contribution to the Society through Remote Sensing

Akihiko Kondoh (Prof.)

Keywords: Hydrology, Physical Geography,
Environmental Modeling by RS and GIS
See more: <http://www.cr.chiba-u.jp/~klab/>



Crop Monitoring by Drone

Chiharu Hongo (Assoc. Prof.)

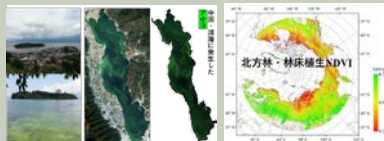
Keywords: Environmental Sciences and Food Production
by Remote Sensing, Implementation of Spatial Information
See more: <http://www.cr.chiba-u.jp/~hongo-lab/english/index.html>



Satellite Data Derived Map of
Nitrogen Fertilizer Recommendation for Wheat

Wei Yang (Assist. Prof.)

Keywords: Remote Sensing of Water Environment
and Terrestrial Vegetation
See More: <http://yangweiphd.weebly.com/>



Two Examples of the Satellite Estimates
of Algal Bloom in Lake Erhai, China (Left),
and Understory NDVI (NDVIu) in Boreal Forests (Right)

CEReS

Center for Environmental Remote Sensing
Chiba University

1-33 Yayoi-cho, Inage-ku, Chiba, 263-8522, Japan

Web : <http://www.cr.chiba-u.jp/english/index.html>

E-mail: kazuko_takegami@chiba-u.jp

(Secretary of the Director)